

B&W Production Printer

RICOH Pro 8200EX/8200s

Printer Copier Facsimile Scanner

RICOH
imagine. change.



Pro 8200EX
96 ppm monochrome

Pro 8200s
96 ppm monochrome

Add value with high-volume convenience

You know what information you want to share. But do you know how to get it to your audience quickly and economically? The RICOH® Pro 8200EX allows you to copy high volumes of newsletters, bulletins and other documents at high speeds with incredible consistency. The RICOH® Pro 8200s is the choice to print, copy and scan documents with ease whether you're a seasoned operator or a first-time user. With either device, you can produce a wide range of impressive, high-quality output that demands attention. Take advantage of an abundance of media options, intuitive operating controls and automated finishing options to deliver more types of print jobs with less training and fewer delays.

Extend print runs, expend less energy

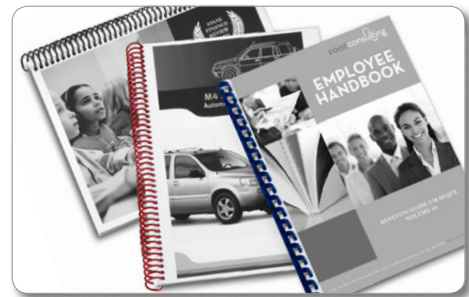
With the Pro 8200EX/8200s, anybody on your team can copy or print longer runs with fewer interruptions. Produce up to 96 documents per minute to complete jobs quickly and decrease turn around time. Add optional paper trays to expand the total paper capacity to an incredible 12,650 sheets and minimize reloads (to save on labor cost). Use the large operation panel for step-by-step, easy-to-follow procedures for paper removal and job recovery. Plus, the device is ENERGY STAR® certified and meets EPEAT® Gold* criteria to help minimize operating costs while reducing environmental impact.

*EPEAT rating is applicable only in the USA.



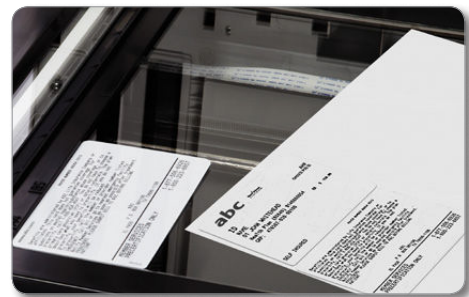
Make an immediate, powerful impression

You face many tasks, two important ones are, keeping timely information in front of your audience and keeping them interested. Do both with the Pro 8200EX/8200s. Take advantage of 1200 x 4800 dpi resolution and uniform toner particles for smooth halftones and gradations to enable more precise reproductions of bulletins, presentations and other documents. Choose from a wide range of optional automated finishing capabilities, including stapling, ring-binding, folding and more, to create professional-looking output confidently with ease.



Share your work quickly

Digitize information and send it to almost any audience in any location in only moments. Use standard one-pass scanning on the Pro 8200s to scan both sides of letter-size documents at up to 220 images per minute with minimal manual steps. Take advantage of a wide range of delivery options — including Scan-to-email, folder, URL and more — to distribute them instantly with the flexibility to save time and money. You can also save your files on a USB or SD card for greater mobility.



Embrace versatility to enhance productivity

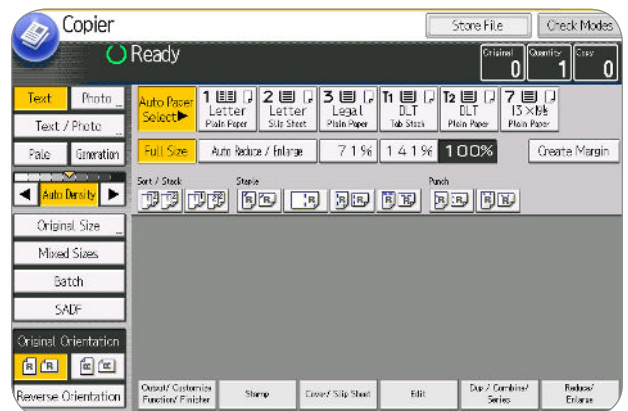
Be more creative with more media choices

Make your work stand out with specialty media options. Give your audience a closer look at technical drawings and manuals up to 13" x 19.2" without compromising image quality or print speed. Get durable output by using thicker stocks up to 350 g/m². Use the optional Multi Bypass Banner Sheet Tray to print at sizes up to 13" x 27.5" on uncoated paper. You can also print on textured, heavy-coated and No-Carbon Required (NCR) paper to accommodate even more types of jobs and audiences.



Simplify daily tasks

Use the Pro 8200EX/8200s to be more productive while doing less of the work. You can save time by planning ahead and specifying print settings and tasks in advance. Create icons on the large control panel for pre-configured settings and copy or print frequently run jobs with fewer manual steps. Access paper settings directly from the robust Paper Library to expedite printing for a wide range of paper stocks. You can even use thumbnail previews to review jobs prior to printing to minimize costly rework and reprints.



Control production and security

It's critical to protect your data. The Pro 8200EX/8200s offers the administrative tools to help meet your company's security requirements. Restrict access to confidential information with User Authentication. Secure Socket Layer (SSL) and HDD encryption help protect information from tampering and hackers automatically. The DataOverwriteSecurity System (DOSS) renders latent information on the hard drive as unreadable. Prevent unauthorized copies with the Copy Security Guard option. You can also use RICOH @Remote to collect meter data, generate detailed production reports and automate service alerts, so there's more information to make smarter print decisions and manage your business more effectively.



To view detailed features of our B&W production products online go to www.rioh-usa.com/products

RICOH Pro 8200EX/8200s

SYSTEM SPECIFICATIONS



Engine Specifications

Configuration	Console
Standard Modes	Pro 8200EX – Copy Pro 8200s – Copy/Print/Scan
Print/Copy Process	Electrostatic transfer with indirect image transfer system
Fusing	Oil-less belt fusing method
System Memory	2 GB RAM / 500 GB (250 x 2) HDD
Document Feeder	Standard 220-Sheet ADF with single-pass color duplex scanning
Control Panel	Full-color 10.4" SVGA touch panel
Copy Resolution	Up to 1200 x 4800 dpi
Paper Registration	Sensor and Mechanical
Quantity Indicator	1 – 9,999
Original Size	Up to 11" x 17" (297 x 432 mm) (from platen)
Warm-Up Time	Less than 360 sec. (from main switch)
First Copy Speed	6.3 seconds
Output Speed	96 ppm
ADF Speed	Simplex: 110 ppm; Duplex: 220 ppm (B&W or Full-color)
Paper Capacity	Tray 1: 1,100 x 2 Trays 2 – 3: 550 x 2 Total Standard/Max. Capacity: 3,300/12,650 sheets Limitless Paper Supply: Supported
Paper Size	Tray 1: 8.5" x 11" Trays 2 – 3: 5.5" x 8.5" to 11" x 17" Optional LCTs and Multi Bypass Tray: Up to 13" x 19.2"/SR3
Paper Weight	Trays 1 – 3: 14 lb. Bond – 95 lb. Cover (52 – 256 g/m ²)
Paper Types	Plain, Recycled, Colored, Letterhead, Preprinted, Prepunched, Bond, Card, OHP*, Tab*, Label*, Gloss*, Matte*, Envelope*, NCR*
Magnification	7 reduction and 5 enlargement
Zoom	25% to 400% in 1% increments
Power Requirements	208-240 V, 50/60 Hz, 20A (dedicated)
Typical Electricity Consumption (TEC)**	11.9 kWh/awk
Max. Power Consumption	3,100 W
Dimensions (WxDxH)	52" x 43.3" x 57.5" (1,320 x 1,100 x 1,460 mm)
Weight	915 lbs. (415 kg)
ENERGY STAR	Certified (only the Pro 8200s is compliant)
EPEAT	Gold Rated (Pro 8200s only)

*Via optional paper sources
**Typical Electricity Consumption by ENERGY STAR program.

Copier Features

Duplex, Simplified Display, Auto Paper Selection, Auto Reduce/Enlarge, Auto Start, Auto Tray Switching, Auto Image Density, User Codes (1,000), Job Programs (25), Electronic Sort/Stack, Image Rotation, Interrupt Copy, User Tools, Job Presets, Book/Series/Combine Copying, Cover/Chapter/Slip Sheet, Tabs, Sample Copy, Stamps/Numbering, Bates Numbering, Shift/Erase/Margin Adjustment, Customizable Home Screen, Import/Export of Preference Settings, Eco-Friendly Indicator, Power On/Off Timer, Energy Saver, Weekly Timer, External USB Keyboard Support, MFP Browser for Web Image Monitor and @Remote, Copy Reservation (8), A3/DLT Counter, Mixed Originals/Batch Mode

Security Features

Data Encryption (Address Book, Authentication Password, SSL Communication, S/MIME, IPsec Communication, HDD), User Authentication (Windows*, LDAP, Basic, User Code, 802.1x Wired), Network Protocol On/Off, IP Filtering, Unauthorized Copy/Print Control, Quota Setting, SMTP over SSL, Mandatory Security Information Print (Compulsory Security Stamp)

Printer Specifications (Pro 8200s only)

CPU	Intel® Celeron® Processor P4505 – 1.86 GHz
RAM	2 GB
HDD	500 GB (250 GB x 2)
Max Print Resolution	1200 x 4800 dpi via VCSEL
Standard Interfaces	Ethernet (1000BASE-T/100BASE-TX/10Base-TX), USB 2.0 Type A x 3/Type B, SD slot IEEE 1284/ECF, IEEE802.11a/b/g/n, Bluetooth TCP/IP (IPv4, IPv6), IPX/SPX
Optional Interfaces	
Network Protocol	
Network Operating Systems	Windows Vista/7/8/8.1/10/Server 2008/Server 2008R2/Server 2012/Server 2012R2; NetWare 6.5; UNIX Sun Solaris 9/10, HP-UX 11.x/11i v2/11i v3, SCO OpenServer 5.0.7/6.0, RedHat Linux Enterprise V4/V5/V6, IBM AIX 5L V5.3/V6.1/V7.1; Novell Netware 6.5 or later; Citrix Presentation Server 4.5; Citrix XenApp 5.0; Mac OS X 10.5 or later; SAP R/3; NPDS Gateway; IBM iSeries AS/400 using OS/400 Host Print Transform
Print Drivers	Standard: PCL5c, PCL6 (XL), PDF Optional for Pro 8200s only: Adobe PS3, Genuine IPDS
Fonts	PCL: 45 scalable + 13 international; PDF: 136; IPDS: 108 (optional)
Printer Features	
Send to Document Server	Sample/Locked/Hold/Store/Scheduled Print, Store and Print, Layout (N-up), Banner Page Print, PDF Direct Print, Mail to Print, Classification Code, Bonjour Support, Windows Active Directory Support, DDNS Support, PCL Resident Font Adoption, Tray Parameter Change from Web Image Monitor, 1200 dpi Support, Mobile Driver, WS Print, Wireless LAN Interface Option, Media Direct Print (Print from USB/SD), Auto Job Promotion, AirPrint® Support, Poster Print, WPS (Wi-Fi Protected Setup)

Scanner Specifications (Pro 8200s only)

Scanning Resolution	Up to 600 dpi (TWIN: 1200 dpi)
Scan Area	Up to 11.7" x 17" (297 x 432 mm)
Scan Speed (LTR/A4)	Simplex: 120 ipm; Duplex: 220 ipm (B&W and Full-color)
Output Format	Single Page: TIFF/JPEG/PDF/High Compression PDF Multi Page: TIFF/PDF/High Compression PDF
Interface Support	Ethernet (1000BASE-T/100BASE-TX/10Base-T), USB 2.0 Type A, SD card slot, Optional Wireless LAN (IEEE802.11 a/b/g/n) SMTP/POP before SMTP
Authentication	
Scanner Features	Scan to USB/SD, WS Scanner, Scan-to Email/Folder/SMB/FTP/URL/NCP/PDF/A/ Digitally Signed PDF/Searchable PDF, TWIN Scanning, Scanned File Naming, LDAP Support, Universal Send, Distributed Scan Management, Preview Before Transmission, PDF Encryption, Drop Out Color Send, B&W/FC Photo, B&W/FC Text, Auto Color Selection, Auto Density, Auto Size Detection, Image Rotation, Mixed Size/SADF/Batch Mode, Reduce and Enlarge, Split Scan, JBIG2 Compression Support

Document Server Specifications

Max. Stored Documents	15,000
Max. Pages per Document	1,000
Max. Stored Pages	15,000
Folder Management	With password, up to 200 personal folders

Accessories

LCIT RT5100 Vacuum Feed Large Capacity Input Tray	
Paper Capacity	4,400 sheets (2,200 x 2)
Paper Size	A5 (LEF)/5.5" x 8.5" – 13" x 19.2"
Paper Weight	11 lb. Bond – 130 lb. Cover (40 – 350 g/m ²)
Power Consumption	Less than 860 W
Power Supply	100 – 127 V
Dimensions (WxDxH)	41.5" x 28.7" x 39.4" (1,054 x 730 x 1,000 mm)
Weight	Less than 484 lbs. (220 kg)

BU5100 Bridge Unit for LCIT RT5100

Paper Size	Width: 3.94" to 13" (210 mm to 330.2 mm) Length: 5.5" to 27.55" (420 mm x 700 mm)
Paper Weight	11 lb. Bond – 130 lb. Cover (40 – 350 g/m ²)
Power Source	From LCIT RT5100
Dimensions (WxDxH)	13" x 28.7" x 39.4" (330 x 730 x 1,000 mm)
Weight	Less than 132 lbs. (60 kg)

RT5080 A3/DLT Large Capacity Tray (LCT)

Paper Capacity	4,400 sheets
Paper Size	5.5" x 8.5" – 13" x 19.2"
Paper Weight	11 lb. Bond – 110 lb. Cover (40 – 300 g/m ²)
Dimensions (WxDxH)	34" x 28.7" x 39.4" (865 x 730 x 1,000 mm)
Weight	407 lbs. (185 kg)

RT5070 A4/LT Large Capacity Tray (LCT)

Paper Capacity	5,000 sheets
Paper Size	5.5" x 8.5" – 8.5" x 11"
Paper Weight	Trays 4 – 5: 14 lb. Bond – 80 lb. Cover (52 – 216 g/m ²)
Dimensions (WxDxH)	Tray 6: 14 lb. Bond – 60 lb. Cover (52 – 163 g/m ²) 21.3" x 28.7" x 39.4" (540 x 730 x 1,000 mm)
Weight	233.2 lbs. (106 kg)

BY5010 Multi Bypass Tray

Paper Capacity	550 sheets
Paper Size	5.5" x 8.5" – 13" x 19.2"
Paper Weight	14 lb. Bond – 80 lb. Cover (52 – 216 g/m ²)
Dimensions (WxDxH)	27.2" x 22.1" x 8.3" (690 x 561 x 210 mm)
Weight	44 lbs. (20 kg)

Multi Bypass Banner Sheet Tray Type S3

Paper Capacity	500 sheets
Paper Size	5.5" x 8.5" – 13" x 19.2"
Paper Weight	Custom Size: 3.94" x 5.5" – 13" x 27.5"
Dimensions (WxDxH)	14 lb. Bond – 80 lb. Cover (52 – 216 g/m ²) 42.9" x 22.1" x 8.3" (1,090 x 561 x 210 mm)
Weight	when attached to BY5010 20.9 lbs. (9.5 kg)

TK5010 A3/DLT Tray Unit

Paper Capacity	1,000 sheets
Paper Size	Up to 11" x 17"
Dimensions (WxDxH)	19.5" x 20.9" x 6.9" (495 x 530 x 175 mm)
Weight	22 lbs. (10 kg)

CI5030 2 Source Cover Interposer

Paper Size	5.5" x 8.5" – 13" x 19.2"
Paper Weight	17 lb. Bond – 80 lb. Cover (64 – 216 g/m ²)
Stack Capacity	200 sheets x 2 trays
Dimensions (WxDxH)	21.2" x 28.7" x 50.8" (540 x 730 x 1,290 mm)
Weight	99 lbs. (45 kg)

SR5050 3,000-Sheet Finisher with 100-Sheet Stapler

Capacity (Proof Tray)	250 sheets (8.5" x 11" or smaller) 50 sheets (8.5" x 14" or larger)
Capacity (Shift Tray)	8.5" x 11" – 3,000 sheets 8.5" x 14" – 11" x 17" – 1,500 sheets 12" x 18" – 13" x 19.2" – 1,000 sheets
Paper Size	5.5" x 8.5" – 13" x 19.2"
Paper Weight	Proof Tray: 14 lb. Bond – 80 lb. Cover (52 – 216 g/m ²) Shift Tray: 11 lb. Bond – 130 lb. Cover (40 – 350 g/m ²)

Output Jogger	Standard
Staple	8.5" x 11" – 2 to 100 sheets 8.5" x 14" – 11" x 17" – 2 to 50 sheets
Staple Position	Top, Bottom, 2 Staples, Top Slant
Dimensions (WxDxH)	39.2" x 28.7" x 44.3" (996 x 730 x 1,126 mm)
Weight	246 lbs. (112 kg)
SR5060 2,500-Sheet Booklet Finisher	
Capacity (Proof Tray)	250 sheets (8.5" x 11" or smaller) 50 sheets (8.5" x 14" or larger)
Capacity (Shift Tray)	8.5" x 11" – 2,500 sheets 8.5" x 14" – 11" x 17" – 1,500 sheets 12" x 18" – 13" x 19.2" – 1,000 sheets
Paper Size	Proof Tray: 5.5" x 8.5" – 13" x 19.2" Shift Tray: 5.5" x 5.5" – 13" x 19.2"
Paper Weight	Proof Tray: 14 lb. Bond – 80 lb. Cover (52 – 216 g/m ²) Shift Tray: 11 lb. Bond – 130 lb. Cover (40 – 350 g/m ²)
Output Jogger	Standard
Staple	8.5" x 11" – 2 to 100 sheets 8.5" x 14" – 11" x 17" – 2 to 50 sheets
Staple Position	Top, Bottom, 2 Staples, Top Slant
Saddle Stitch Staple	8.5" x 11" – 13" x 19.2" – 20 sheets; Center 2 Position
Dimensions (WxDxH)	39.2" x 28.7" x 44.3" (996 x 730 x 1,126 mm)
Weight	246 lbs. (112 kg)

FD5020 Multi-Folding Unit

Folding Type	Single Sheet Mode: Z-Fold, Half-Fold/Print inside, Half-Fold/Print outside, Letter Fold-in/Print inside, Letter Fold-in/Print outside, Letter Fold-out, Double Parallel/Print inside, Double Parallel/Print outside, Gate-Fold/Print inside, Gate-Fold/Print outside
Multiple Sheets Mode	Half-Fold/Print inside, Half-Fold/Print outside, Letter Fold-in/Print inside, Letter Fold-in/Print outside, Letter Fold-out
Paper Size	Single Sheet Mode: Z folding: 8.5" x 11" – 12" x 18"; Half folding: 8.5" x 11" – 13" x 19.2"; Letter folding: 8.5" x 11" – 13" x 19.2"
Multiple Sheets Mode	Double Parallel folding: 8.5" x 11" – 12" x 18"; Gate folding: 8.5" x 11" to 12" x 18"; Half folding: 8.5" x 11" – 13" x 19.2"; Letter Fold-out: 8.5" x 11"; Letter Fold-in: 8.5" x 11"
Dimensions (WxDxH)	18.5" x 28.7" x 39.4" (470 x 730 x 1,000 mm)
Weight	203 lbs. (92 kg)

RB5020 Ring Binder

Paper Size	8.5" x 11"/A4
Paper Weight	17 lb. Bond – 80 lb. Cover (64 – 216 g/m ²)
Stack Capacity	Binding Mode: 11 sets; Punching Mode: 100 sheets
Ring Bind Capacity	2 to 100 sheets
Number of Holes	LR – 21, AA – 23
Ring Supply	Black or White, Up to 50 or 100 sheets
Tab Stock	Supported
Dimensions (WxDxH)	34.2" x 28.7" x 39.8" (870 x 730 x 1,010 mm)
Weight	308 lbs. (140 kg)

DU5050 Decurl Unit

Decurl Function	Three steps pressure adjustment (from operation panel)
Paper Weight	11 lb. Bond – 130 lb. Cover (40 – 350 g/m ²)
Dimensions (WxDxH)	2.8" x 20" x 7.1" (71 x 509 x 181 mm)
Weight	11 lbs. (5 kg)

GBC StreamPunch Ultra

Punched Paper Sizes	10 fixed sizes (A5 – A3)
Punched Media Weight Range	20 lb. Bond – 110 lb. Cover (up to 300 g/m ²)
Tab Punching	Yes
"Two-Up" Punching	Yes
Power Supply	115 V, 60 Hz
Dimensions (WxDxH)	17.5" x 28.7" x 39.4" (445 x 730 x 1,000 mm)
Weight	220 lbs. (100 kg)

Additional Accessories

PostScript3 Unit Type S7, IPDS Unit Type S7, ADF Double Feed Detection, Transit Pass Unit for Perfect Binder Type S1, Cover Interposer Tray for Perfect Binder Type S1, Multi Bypass Attachment Kit for RT5100 LCIT Type S3, Roll-Away Cart Type S10, Punch Unit PUS020, Counter Interface Unit Type A, Key Counter Bracket Type 1027, Copy Connector Type 3260, IEEE 802.11a/b/g Interface Unit Type M2, OCR Unit Type M2, Copy Data Security Unit Type G, File Format Converter Type E, IEEE 1284 Interface Board Type A, GB5010 Perfect Binder, TR5040 Booklet Trimmer, HCI3500 Plockmatic High Capacity Interposer, PBM350/500 Plockmatic Booklet Maker, RP/IF Interface Box Type S3, Fiery EB-34 Controller (Optional for Pro 8200s only), High Capacity Stacker SK5030

Supply Yields

Toner: 82,000 per bottle*	
Drum: 2,500K images/unit	
Developer: 860K prints/bag	
*Based on 6% chart of Ricoh A4 LEF test chart under normal operating conditions. For maximum performance and yield we recommend using genuine Ricoh parts and supplies.	
Specifications subject to change without notice.	



www.ricoh-usa.com

Ricoh USA, Inc., 70 Valley Stream Parkway, Malvern, PA 19355, 1-800-63-RICOH
RICOH and the Ricoh Logo are registered trademarks of Ricoh Company, Ltd. All other trademarks are the property of their respective owners. ©2016 Ricoh USA, Inc. All Rights Reserved.
The content of this document, and the appearance, features and specifications of Ricoh products and services are subject to change from time to time without notice. Products are shown with optional features. While care has been taken to ensure the accuracy of this information, Ricoh makes no representation or warranties about the accuracy, completeness or adequacy of the information contained herein, and shall not be liable for any errors or omissions in these materials. Actual results will vary depending upon use of the products and services, and the conditions and factors affecting performance. The only warranties for Ricoh products and services are as set forth in the express warranty statements accompanying them.